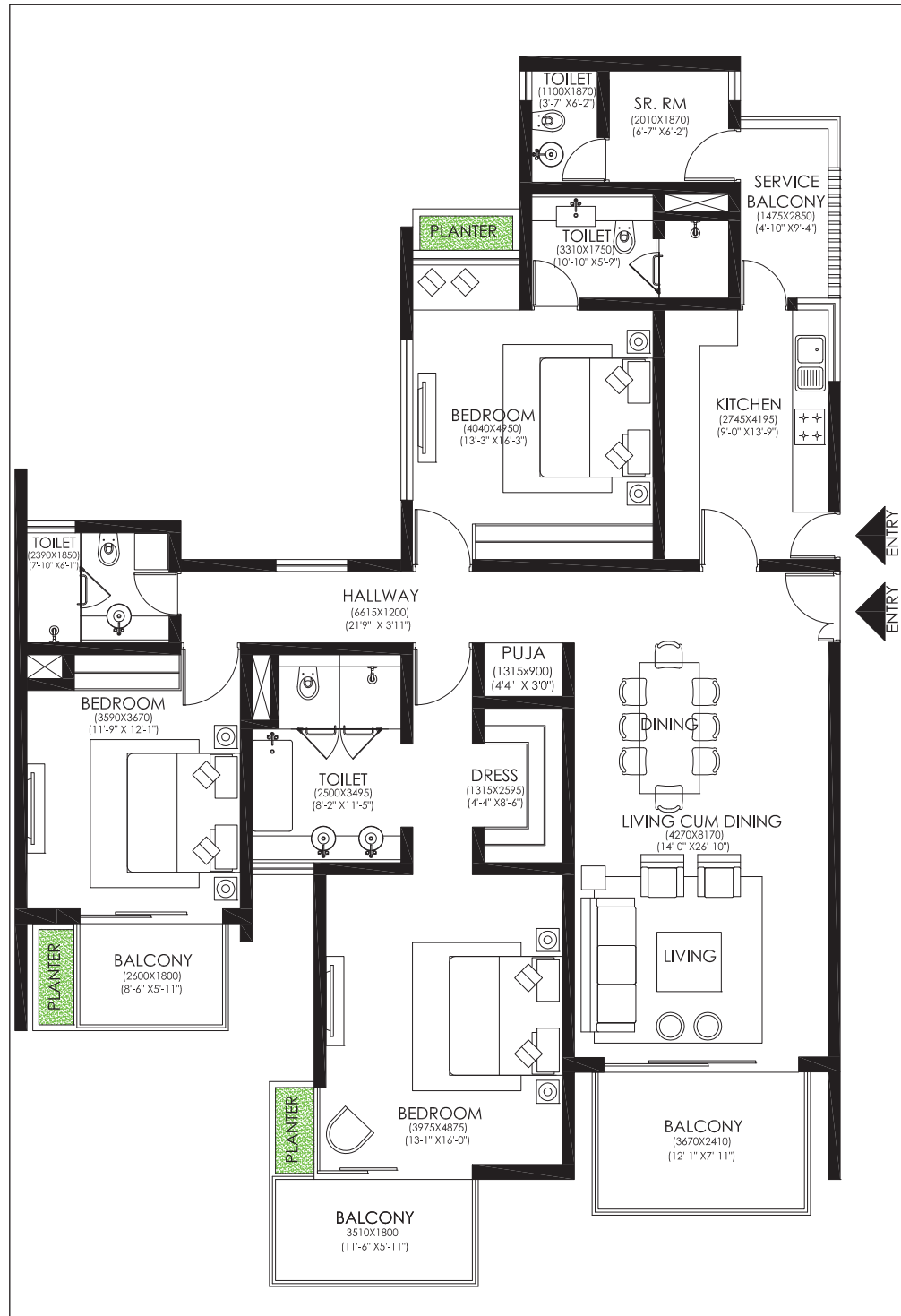
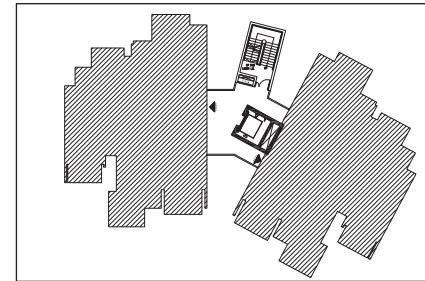


3 BHK - MID RISE

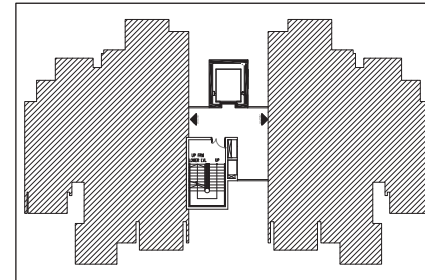
UNIT AREA: 2527 SQFT (2698 SQFT with terrace)



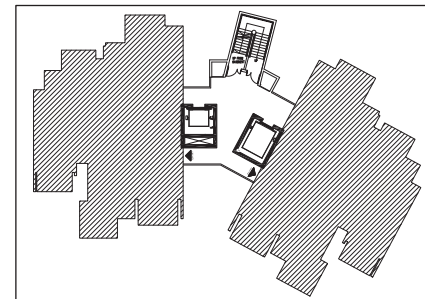
TYPICAL PLAN OF 3BHK IN MID-RISE



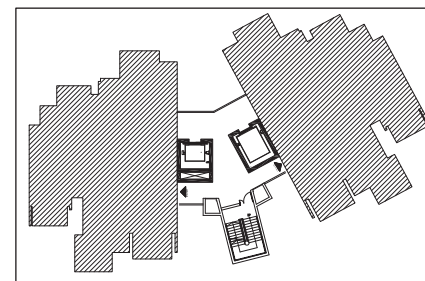
D14



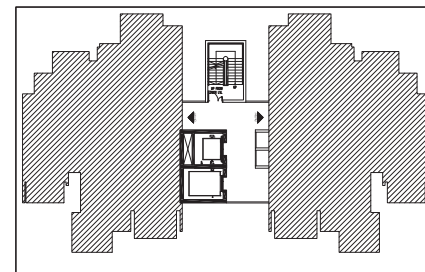
D2,D5,D8,D26



D3,D4,D9,D12,D13,D15,D19,D20,D21,D22



D10,D11,D16,D17,D18,D24,D25



D23

LOCATION OF TYPICAL 3BHK IN MID-RISE

