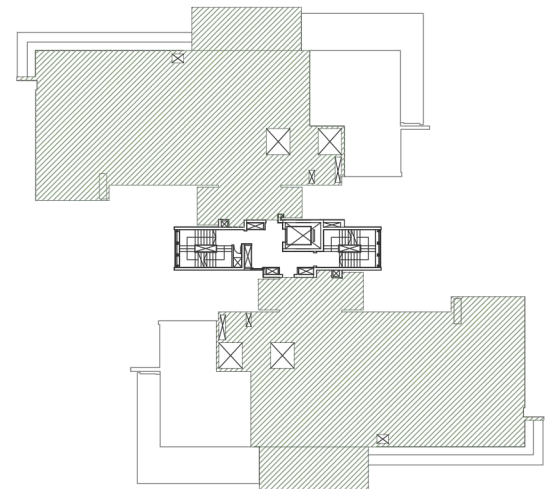
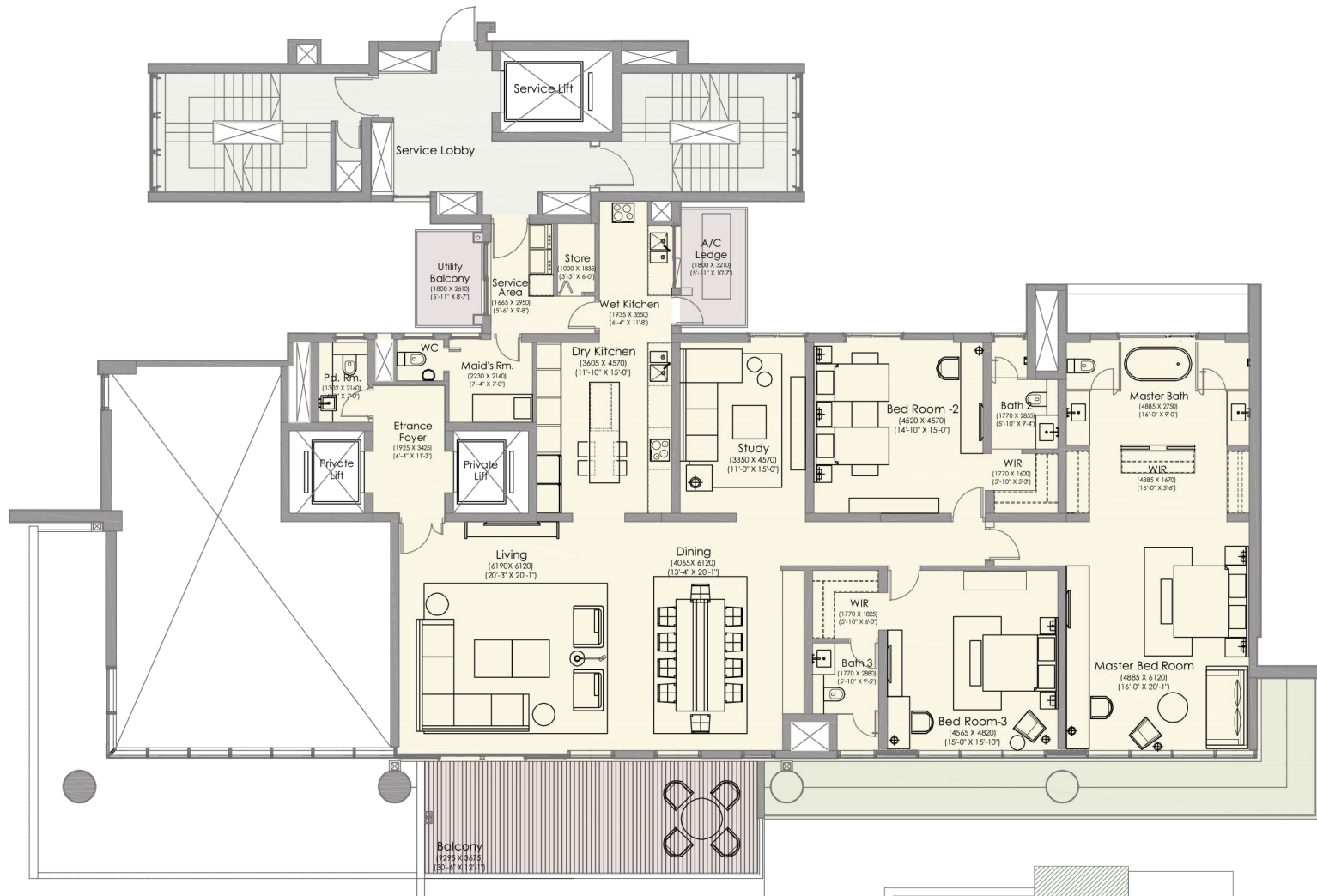


# THREE BED ROOM UNIT - INDICATIVE LAYOUT

UNIT AREA - 4786.83 Sq ft (Approx.)



<b>TOWER A, E &amp; F (BLOCK I &amp; II):</b>	2 <sup>nd</sup> , 4 <sup>th</sup> , 6 <sup>th</sup> , 8 <sup>th</sup> , 10 <sup>th</sup> , 12 <sup>th</sup> , 14 <sup>th</sup> , 16 <sup>th</sup> , 18 <sup>th</sup> , 20 <sup>th</sup>
<b>TOWER B (BLOCK I) TOWER C, D (BLOCK I &amp; II)</b>	2 <sup>nd</sup> , 4 <sup>th</sup> , 6 <sup>th</sup> , 8 <sup>th</sup> , 10 <sup>th</sup> , 12 <sup>th</sup> , 14 <sup>th</sup> , 16 <sup>th</sup> , 18 <sup>th</sup> , 20 <sup>th</sup> , 22 <sup>th</sup> 24 <sup>th</sup> , 26 <sup>th</sup>
<b>TOWER B (BLOCK II)</b>	2 <sup>nd</sup> , 4 <sup>th</sup> , 6 <sup>th</sup> , 8 <sup>th</sup> , 10 <sup>th</sup> , 12 <sup>th</sup> , 14 <sup>th</sup> , 16 <sup>th</sup> , 18 <sup>th</sup> , 20 <sup>th</sup> , 22 <sup>th</sup> 24 <sup>th</sup>

THREE BEDROOM UNIT FLOOR LOCATIONS AT DIFFERENT TOWERS